

Newsletter



"Growing Great People"
Te Whakatipu Tangata Nui

45 Whitmore Road, RD1, Gisborne 4071

Phone/Fax: 06 862 5725 • Email: office@ormond.school.nz

www.ormond.school.nz



Follow us on Facebook

PHONE: 862 5725

EMAIL: office@ormond.school.nz

WEBSITE: www.ormond.school.nz

Kia ora Parents, Caregivers and Whānau,

Welcome to the end of a very wet week seven as we head towards the final weeks of term two.

As we enter the final week of our learning check ins and teachers begin to construct our mid year reports for whānau. We are reminded of the importance of our home-school relationships and the role that our Whānau Learning Conversations play in the relationship between home and school.

Home-school partnerships encourage and facilitate parental involvement in the educational process. Whether it's participating in school events or assisting with homework, parents and whānau who are actively engaged in their child's education demonstrate the importance of learning and serve as positive role models.

Home-school partnerships acknowledge that education is not just limited to academic learning alone.

By collaborating, parents and educators can address the social, emotional and physical well-being of students. This holistic approach ensures that a child's overall development is nurtured, promoting their overall success and happiness.

Our Whānau Learning Conversations play a vital role in enhancing the strength of our home-school partnership. They provide a unique opportunity for parents, students and teachers to engage in meaningful discussions about a student's progress, strengths, challenges and goals. These conversations allow us to gain valuable insights into each child's individual learning journey and tailor our support accordingly.

To enable enough time for these Whānau Learning Conversations, our school will be closing at 12:30pm on Tuesday 27th June. This early closure will provide dedicated time for these valuable discussions and allow us time to see every child's whānau at the given times. The school bus will run on this day leaving at the earlier time of 12:45pm. Please make the necessary arrangements for your child / children to be picked up at the earlier time. Wednesday's Whānau Learning Conversations (28th June) will begin from 3pm and school will finish at the normal time of 2:45pm. We encourage you to take advantage of this opportunity to meet with your child's teachers and engage in productive conversations about their academic and personal development.

Our School Loop app will be used for booking Whānau Learning Conversations. The app enables you to conveniently schedule appointments with teachers, ensuring that you have the necessary time to address any concerns or questions you may have. If you feel that you require further time to discuss your child's learning or concerns you may have, please make a follow up time with your child's teacher for this to happen in a timely fashion. We firmly believe that when parents, whānau, students and educators work together, the educational journey of our students becomes even more enriching. Let us continue to build a strong partnership to support our children's growth and success. We look forward to seeing you all at the Whānau Learning Conversations in the last week of term.

Noho ora mai rā, Stay safe and have a great weekend. Jonathan Poole - Tumuaki / Principal

Key Dates Term Two

- **14th June** - Girls and Boys rugby 7's
- **23rd June** - Mid year reports home
- **25th June** - BOT hui
- **27 and 28th June** - Whānau Learning Conversations
- **28th June** - Horo Hopu
- **30th June** - Last day of Term

Note: Depending on circumstances we may not attend all events. Dates are subject to change.



GROWING GREAT PEOPLE
TE WHAKATIPU IWI NUI



ORMOND SCHOOL LEARNERS ARE GREAT PEOPLE WHO ARE:

Communicators, Collaborative, Connected, Confident, Thinkers, Self managers, Shows Perseverance

Don't forget:

OUR 4 R'S

AT ORMOND SCHOOL ARE:

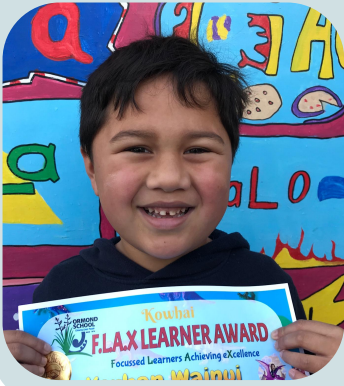
**RESPECT
RESILIENCE
REFLECTION
RESPONSIBILITY**

When we are using these 4 values, we are **BEING A GREAT PERSON!**

F.L.A.X Award Recipients

KORBAN

Korban, we like the way you have been involved in your learning this week. Each day when the bell rings you come straight to the mat ready for learning. You show interest in the activities we do and chose to participate. You even asked to practice your handwriting! You are playing well with others in our class and using your words when things don't go your way. It is great to see big improvements in your attitude. Keep it up! Ka pai tō mahi.



WILBUR

Wilbur, you are a responsible and reliable member of Karaka. Whenever there is a job to do, you are the first to volunteer. Whenever someone is not sure what to do, you go out of your way to help them, but not do the learning for them. Wilbur, your classmates appreciate your caring nature and they enjoy learning with you because you listen to their ideas and opinions as well as sharing your own. We appreciate what a huge help you are in our class. You are a Powerful Learner Superhero Wilbur, tino pai, keep up the great work!



ANNABELLE

You have really grown in confidence this year and are a great role model for the younger students in our class. We love your new 'give it a go' attitude and the effort you are putting into every area of your learning. We were particularly impressed with you volunteering to stand up in front of the class and deliver your pepeha in Te Reo! Kei runga noa atu koe!



ZOE

Zoe, you having been in charge of your learning this week. Well done. You came and checked in with your maths, got some feedback, that reminder of what to do, then you were away. This is so good to see. You learnt some rugby skills with Mitch and were straight into showing your new knowledge. When you use all these skills across different areas we know that you are becoming a Powerful Ormond School Learner. Keep up that great attitude, Zoe Ka mau te wehi, Awesome



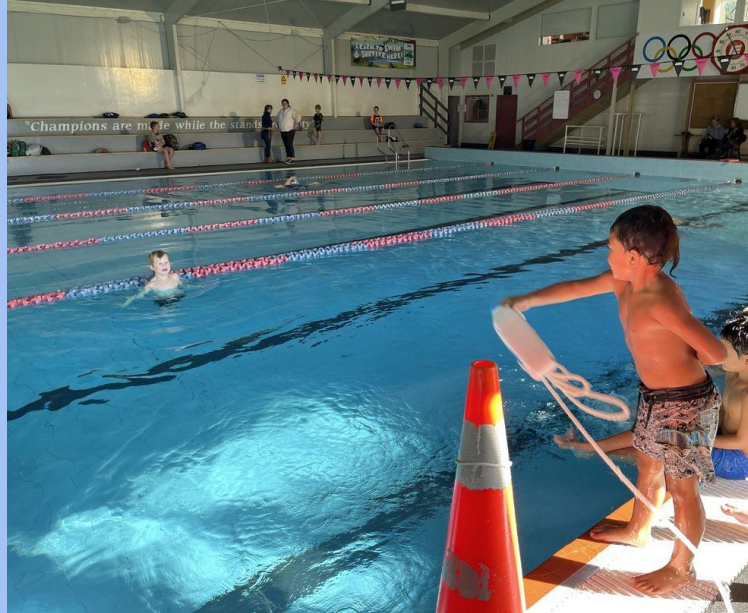
KEEP
NEW ZEALAND
BEAUTIFUL®

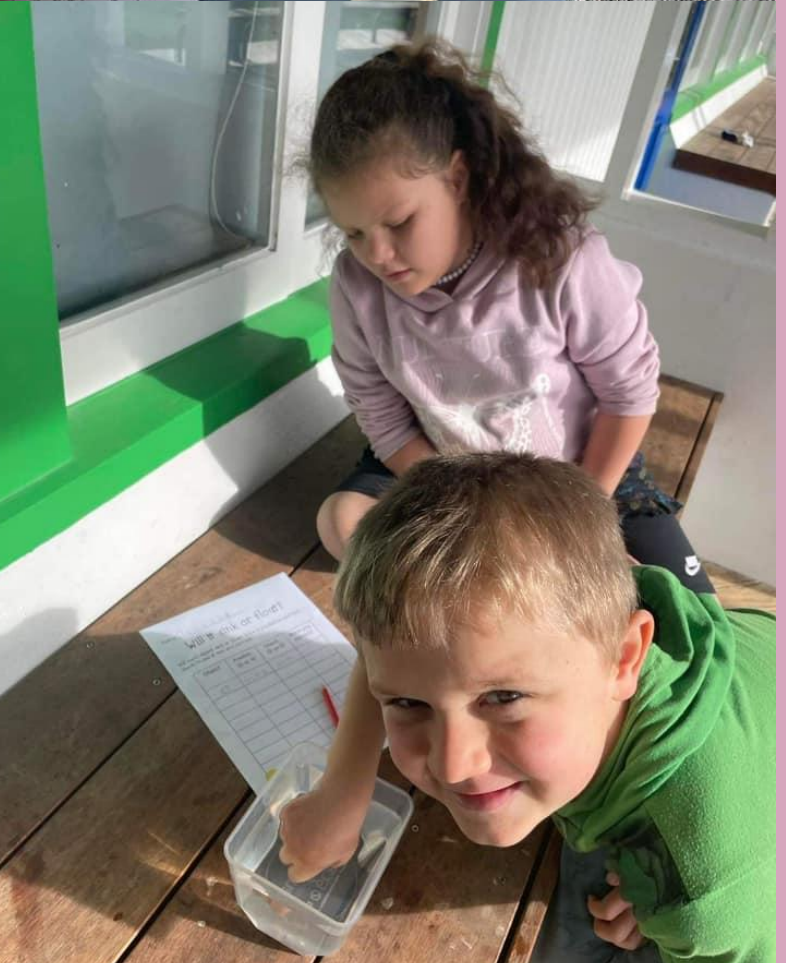
TIDY KIWI AWARD - WEEK 7

Kōwhai

BE A
TIDY
KIWI









NOTICES & UPDATES

After School Sign Out: When leaving the school at the end of the day please make sure that you see the duty teacher to sign your child out. This is so we are sure that children have left the school safely accompanied by their caregiver or an adult that has consent to pick them up.

GDC township plans: The Council is consulting on its annual plan, like previous years plans this includes township upgrades and improvements.

Ormond Township doesn't feature anywhere on Councils plans at any point.

As a community we need submit on Councils proposals. Get Ormond Township on the list, and advocate for improvement.

Please submit on the Councils proposed plan by Friday June 16th and help get Ormonds voice heard.

Submit here,

<https://participate.gdc.govt.nz/>

The current Township plans can be found below

<https://www.gdc.govt.nz/council/plans-policies-and-bylaws/plans/township-plans>

Sports Draws

Netball

Year 1 & 2 Ormond Thursdays 3:45pm

Year 3 & 4 Friday 9th June 4:15pm - Court 6
Ormond Ferns Vs Decosta Enterprise Ngatapa Stars

Year 5 & 6 - Saturday 10th June 9am - Court 4
Ormond Vs Makauri

Football Draw - Watson Park

FIRST KICKS 5u5 - WP1 - 9:15am
Ormond young guns V Central Lions

MINI FOOTBALL 7u7 - WP14 - 9:30am
Ormond All Stars V Sonrise Eagles

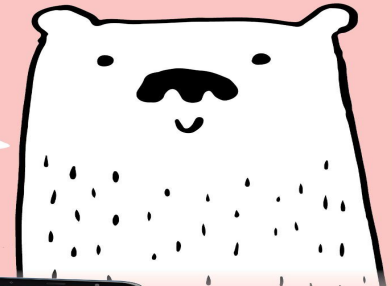
FUN FOOTBALL 9u9 - WP19 - 10:30am
Ormond Soccer Rockets V St Mary Strikers

Hey there!

Just popping in to check you have downloaded our school app?

Stay in the loop with Skool Loop.

- ✓ Events
- ✓ Notices
- ✓ Instant school messages
- ✓ Book interviews
- ✓ Absentee
- ✓ Newsletters
- ✓ Permission Slips



Available on the App Store

Get it on Google play

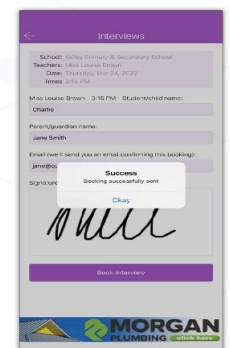
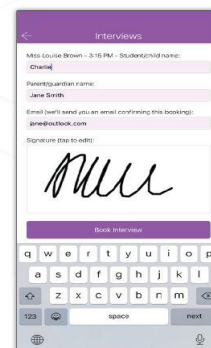
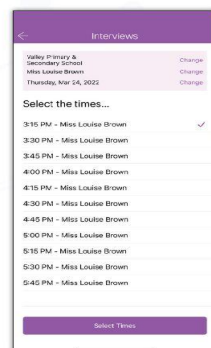
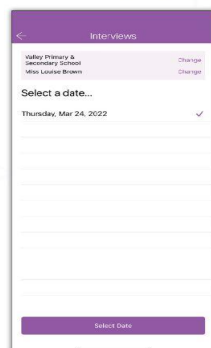
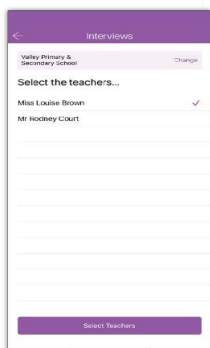


Simple free download: In Google play & App Store search 'Skool Loop' & choose our school once installed.

Booking Interviews with



Download **The Skool Loop App**. A simple 100% free download: In Google Play & App Store search 'Skool Loop' & choose our school once installed.



PLEASE SUPPORT THOSE WHO SUPPORT US



Proud to be supporting our rural communities

Simon Bousfield
027 665 8778

Bousfield Macpherson Ltd, Bayleys
Licensed under the REA Act 2008

Stephen Thomson
027 450 6531

Bousfield Macpherson Ltd, Bayleys
Licensed under the REA Act 2008

BAYLEYS ALTOGETHER BETTER

Residential / Commercial / Rural / Property Services

East Coast
SHEARING

Friendly, family-oriented team that can get your shearing done. Catering for lifestyle to stations.

BEAU GUELFY - 027 842 4172

GILLIES
Electrical 2017 Limited

Electrical Repair & Maintenance Specialists
Residential & Commercial

380 Palmerston Rd, Gisborne
Phone (06) 867 9022

www.gillieselectrical.co.nz

GH Williams ENGINEERING

Gene Williams
PRINCIPAL

manufacturer of fruit handling equipment, tractor implements & general engineering

RD 1, 31 Brown Road
Gisborne,
New Zealand
Ph/Fax 06 862 5811
Mobile 021 222 0264

ADVANCE TECH TRACTOR SHOP
4 SALES 4 PARTS 4 SERVICE

Open Weekdays
9am-5.30pm

1150 Matawai Rd, Ormond
Mike Longley 021 311 067

www.advancetech.shop

O.T.T CROP PROTECTORS

Paul Gordon Contracting Ltd

Overhead Crop Canopies
Wind Break Construction & Hot Houses

Phone 027 282 9302
paulgordon.ott@gmail.com

Eastland Veterinary Services

GISBORNE | 743 Gladstone Rd | 06 867 9405
WAIROA | 46 Freyberg St | 06 838 6099
www.evs.co.nz

evolutionwireless
...we do internet.

- » Rural Knowledge
- » Local Support
- » Local Reliability

Ultra-fast rural broadband with extensive Eastland coverage and outstanding local support. We will build the solution to get you online!

0800 4 WIRELESS
0800 494 735

join the evolution!

- sales@ew.net.nz
- facebook.com/evolutionwirelessnz
- Level 2, 40 Reads Quay, Gisborne 4010

Oakfield Limited

Drainage Design & Assessor • Asbestos Assessor

- Building Surveys • Air Monitoring
- Wastewater Assessments & System Design
- Site Assessments • Asbestos Testing

Independent assessor with over 40 yrs of experience

Request a quote from me, Alan Hall:
Phone: 06 862 5597 | Mobile: 027 272 4907
Email: oaklandtruffle@xtra.co.nz

Manuel
Agrispraying

BROADACRE SPRAYING SERVICES

Ph Hamish 027410 0881
manuelagrispraying@gmail.com

WRS LIVESTOCK SCANNING SERVICES

Accurate Pregnancy Scanning of:

Ewes • Cows • Hinds

All enquiries 06 836 7430
www.wrslivestockscanning.co.nz

GIZZY WASTE
SEPTIC SUCTION & SKIP BINS

06 867 3606 • 027 434 0924
info@gizzywaste.co.nz • www.gizzywaste.co.nz

Formerly known as Wayne's Waste #LOCALS SUPPORTING LOCALS

Eastland
Building & Farm Supplies

Call us for a quote on your fencing and building supplies. We offer competitive prices, quality product, and excellent service.

Open Mon-Fri 7am-5pm & Sat 8:30am-12pm. 19-21 Mahia Ave, Wairoa
T: 06 838 6948 E: info@eastlandbfs.co.nz www.eastlandbfs.co.nz