

Newsletter



"Growing Great People"
Te Whakatipu Tangata Nui

45 Whitmore Road, RD1, Gisborne 4071

Phone/Fax: 06 862 5725 • Email: office@ormond.school.nz

www.ormond.school.nz



Follow us on Facebook

PHONE: 862 5725

EMAIL: office@ormond.school.nz

WEBSITE: www.ormond.school.nz

Kia ora Parents, Caregivers and Whānau,

It is hard to believe that we are quickly approaching the last week of term 1. Although we have had an extremely short week due to the Easter break, there has been still plenty of great learning opportunities for our tamariki this week.

A huge congratulations to all of our students who put their hand up to participate in the Rural Schools Rippa Day held here at Ormond School. It was an fantastic event which was well supported by other rural and small schools in our region. All of those who took part can be proud of their efforts, as they were asked to step out of their comfort zones and quickly form relationships with students from other schools, to make the team required for this day. The most pleasing aspect of the day, was the number of our students who tried something new, which demonstrated our learner quality of confidence - ka mau te wehi. Thank you also to those parents who organised the fundraising stall for our Year Five and Six away camp. It was highly successful and provided some great revenue towards the cost of this learning experience for our senior learners.

We regularly talk to our learners about 'going into the learning pit' and you may have heard your child mention that they were in the pit during their learning. The learning pit is a metaphor for explaining what we do as learners, when we are confronted by a challenging or a new learning situation. We encourage our learners to go into the learning pit regularly! We want our learners to be challenged by their learning, but we also want them to be successful and acquire new knowledge because of this experience. It is important that when our learners are in the learning pit that they know how to get themselves out. This could be by asking a friend or an adult for help, researching for more information or ask appropriate questions to help with their understanding. It is also important that we as learners understand that we may not get the new learning straight away and it may take more than one try to get this, but as long as we don't give up, we will get it. The key message we want our learners to take from the learning pit metaphor is, yes, learning can be challenging and we need to go into the learning pit, but we must know how to get out, to further our learning and understanding.

Stay safe! Ka pai tō rā whakatā, have a great weekend - Jonathan Poole - Tumuaki / Principal

Key Dates Term One

- **8th April** - Snorkelling - Rimu & Pōhutukawa
- **10th April** - Inter School Rippa Rugby
- **13th April** - Last day of Term One

Note: Depending on circumstances we may not attend all events. Dates are subject to change.

Key Dates Term Two

- **29th April** - Term Two Starts
- **3rd May** - Anzac Day Assembly
- **8th May** - Inter School Football
- **17th May** - Pink Shirt Day
- **22nd May** - Gym Festival
- **29th May** - Weetbix Try Challenge
- **31st May** - Teacher Only Day
- **3rd June** - King's Birthday
- **5th June** - Fast Five Netball
- **19th June** - Inter School Rugby 7s
- **19th - 21st June** - Life Education
- **28th June** - Matariki Public Holiday
- **2nd - 4th July** - Learning Conversations
- **3rd July** - Horo Hopu
- **5th July** - Last day of Term

Note: Depending on circumstances we may not attend all events. Dates are subject to change.

**TEACHER
ONLY DAY**

**MAY
31
2024**

**SAVE
THE
DATE**

THIS IS A MINISTRY OF
EDUCATION ACCORD DAY
TO ENABLE TEACHERS TO
ENGAGE IN PROFESSIONAL
DEVELOPMENT AROUND
THE NEW ZEALAND
CURRICULUM REFRESH.

F.L.A.X Award Recipients

JAKE



Jake, it is great to see you taking more and more responsibility for your learning. In the last week I have watched you often moving away from your friends to be able to focus on your learning. You also use your powerful ignoring muscles to ignore distractions so you can finish your tasks and get the most out of your learning time, just like you did yesterday when doing your handwriting. That is exactly what powerful learners do so you must be one of them! Ka pai hoki koe, keep on the great work Jake!

IZZY

Izzy, you are a quiet and thoughtful learner. You are growing in confidence all the time, sharing your ideas with the class and asking for help or what to do next. You are kind and you include others in what you are doing. You are starting to add more detail to your writing and self assess, to reflect on your learning and what you need to work on next. Ka rawe Izzy, you are a Powerful Learner Superhero!



DAISY

Daisy you are a ray of sunshine in our class. Your attitude to your learning is so positive. When you are in the Learning Pit, persevere until you have mastered your task. You are ready to take on challenges, pushing your limits and do your best at things you try. You will come and ask for help if you are not sure and will help others if they ask you. You are soaring to the moon Daisy, like a powerful learner does. Tū Meke!



PENELOPE

I am so proud of Penny and her constant dedication to her learning. She is the most fabulous role model for managing herself. She takes full responsibility for her learning and makes sure that she doesn't get distracted by her classmates (or distract them). She is constantly showing her marvellous mat manners to be ready for learning. She consistently shows respect at all times and is an absolute dream to teach. Thank you Penny and keep up the awesome mahi!



KEEP
NEW ZEALAND
BEAUTIFUL

TIDY KIWI AWARD - WEEK 10

Pōhutukawa

BE A
TIDY
KIWI



SPORTS DRAWS TOUCH

**Ormond Hurricanes
Vs
Waikirikiri
9am field J4**

**Ormond Chiefs
Vs
Wainui Chiefs
9.45am Field 10**

**Ormond Blues
Vs
Central Panthers
10.30am field 1**

This is the last Week of Touch



**Soccer boots Size 6US
Great condition - \$15
See Ash in the office**

Rural Schools Rippa Day



Ka mau te wehi! Well done to our awesome Rippa Rugby stars, who participated with pride at the recent Rural Schools Rippa Rugby day. They are all absolute legends, who can be very proud of their efforts.

Rural Schools Rippa Day



Inter School Triathlon

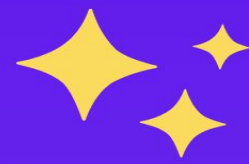


NOTICES & UPDATES

Sport Uniforms: Please make sure your child Brings back their Touch and Cricket uniforms next week in preparation of our winter sports.

School Hats: Term One is wear your hat term. Students are required to wear a wide brimmed or bucket hat whilst in the playground and during outdoor activities. School hats are available in the office for \$25.00

Ormond Schools major fundraiser for
2024, fundraising for a school van



Save the Date



Quiz night 30th August

- We are on the lookout for the following -
- Auction items
 - Silent auction items
 - Sponsors for tables and quiz rounds (\$100 each)
 - Meat donations (for dinner)



If anyone can please help with the above or happy to ask businesses, that would be amazing!

Please let Ash or Zara know if you are able to help in anyway, thank you!

PLEASE SUPPORT THOSE WHO SUPPORT US



Proud to be supporting our rural communities

Simon Bousfield
027 665 8778

Bousfield Macpherson Ltd, Bayleys
Licensed under the REA Act 2008

Stephen Thomson
027 450 6531

Bousfield Macpherson Ltd, Bayleys
Licensed under the REA Act 2008

BAYLEYS ALTOGETHER BETTER

Residential / Commercial / Rural / Property Services

East Coast
SHEARING

Friendly, family-oriented team that can get your shearing done. Catering for lifestyle to stations.

BEAU GUELFY - 027 842 4172

GILLIES
Electrical 2017 Limited

Electrical Repair & Maintenance Specialists
Residential & Commercial

380 Palmerston Rd, Gisborne
Phone (06) 867 9022

www.gillieselectrical.co.nz

GH Williams ENGINEERING Gene Williams PRINCIPAL

manufacturer of fruit handling equipment, tractor implements & general engineering

RD 1, 31 Brown Road
Gisborne,
New Zealand
Ph/Fax 06 862 5811
Mobile 021 222 0264

ADVANCE TECH TRACTOR SHOP
4 SALES 4 PARTS 4 SERVICE

Open Weekdays
9am-5.30pm

1150 Matawai Rd, Ormond
Mike Longley 021 311 067

www.advancetech.shop

O.T.T CROP PROTECTORS

Paul Gordon Contracting Ltd

Overhead Crop Canopies
Wind Break Construction & Hot Houses

Phone 027 282 9302
paulgordon.ott@gmail.com

Eastland Veterinary Services

GISBORNE | 743 Gladstone Rd | 06 867 9405
WAIROA | 46 Freyberg St | 06 838 6099
www.evs.co.nz

evolutionwireless
...we do internet.

- » Rural Knowledge
- » Local Support
- » Local Reliability

Ultra-fast rural broadband with extensive Eastland coverage and outstanding local support. We will build the solution to get you online!

0800 4 WIRELESS
0800 494 735

join the evolution!

- sales@ew.net.nz
- facebook.com/evolutionwirelessnz
- Level 2, 40 Reads Quay, Gisborne 4010

Oakfield Limited

Drainage Design & Assessor • Asbestos Assessor

- Building Surveys • Air Monitoring
- Wastewater Assessments & System Design
- Site Assessments • Asbestos Testing

Independent assessor with over 40 yrs of experience

Request a quote from me, Alan Hall:
Phone: 06 862 5597 | Mobile: 027 272 4907
Email: oaklandtruffle@xtra.co.nz

Manuel Agrispraying

BROADACRE SPRAYING SERVICES

Ph Hamish 027410 0881
manuelagrispraying@gmail.com

WRS LIVESTOCK SCANNING SERVICES

Accurate Pregnancy Scanning of:
Ewes • Cows • Hinds

All enquiries 06 836 7430
www.wrslivestockscanning.co.nz

GIZZY WASTE
SEPTIC SUCTION & SKIP BINS

06 867 3606 • 027 434 0924
info@gizzywaste.co.nz • www.gizzywaste.co.nz

Formerly known as Wayne's Waste #LOCALS SUPPORTING LOCALS

Eastland
Building & Farm Supplies

Call us for a quote on your fencing and building supplies. We offer competitive prices, quality product, and excellent service.

Open Mon-Fri 7am-5pm & Sat 8:30am-12pm. 19-21 Mahia Ave, Wairoa
T: 06 838 6948 E: info@eastlandbfs.co.nz www.eastlandbfs.co.nz